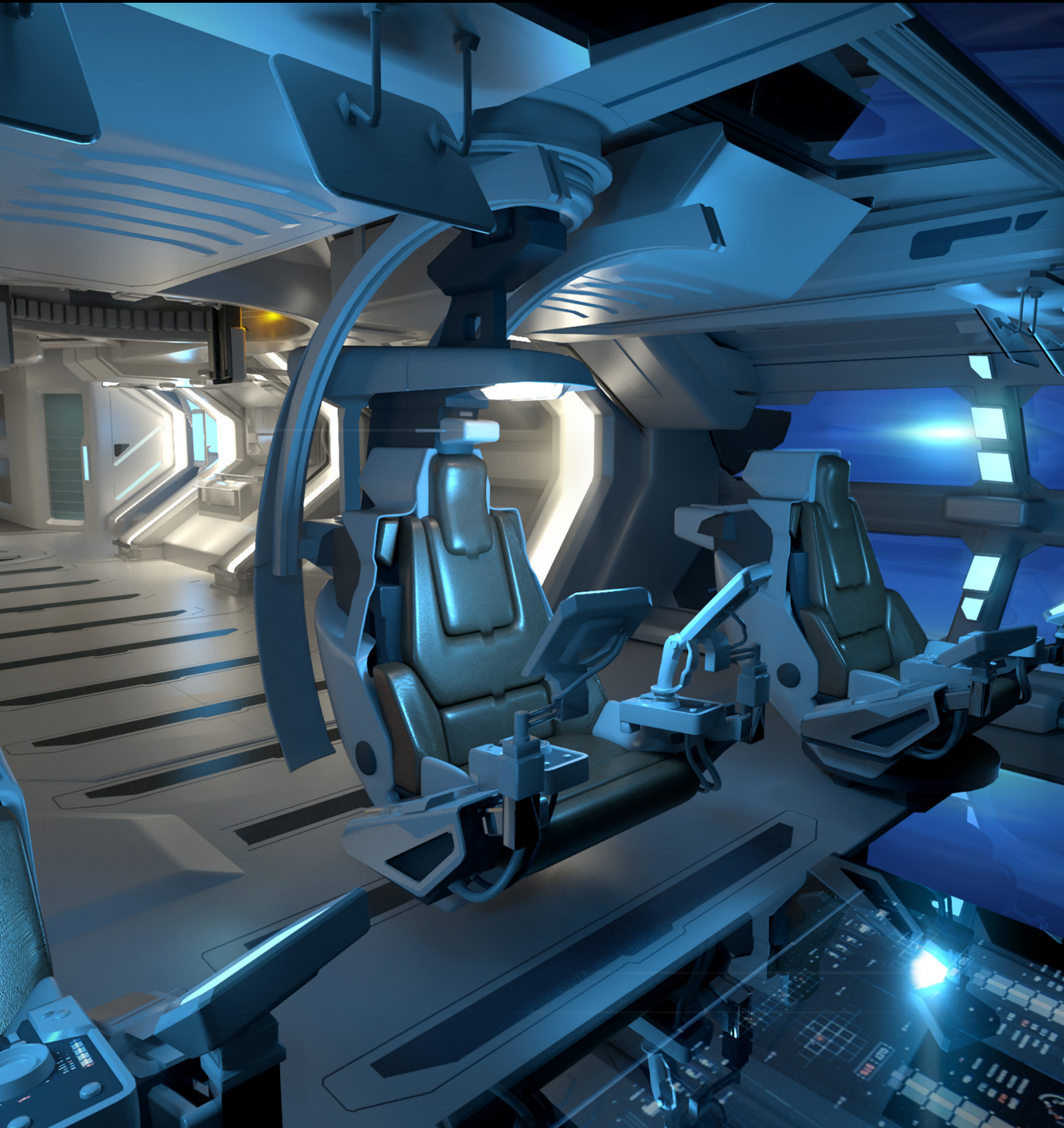


constellation **Phoenix**  
*product overview brochure*







## Chariot of the gods

The true core of any ship is the command center. The Constellation Phoenix starts with a primary operator seat designed by Gallo & Frost. UltraRez displays provide crystal clear display elements from a variety of perspectives as well as efficient touchscreen interfaces.

Want more? Every Constellation is prefitted for an expansion station — you can choose and purchase from our upcoming range of options, including command, exploration and entertainment.



# Triple crest dining

Every meal will be a banquet on an Atuvo state table with a complete kitchen system at your beck and call.

Experience haute cuisine like never before with the Phoenix's top-of-the-line range of cooking appliances.



# A state of rest

Every guest cabin is fitted with easily accessible storage compartments, a privacy screen and a contouring, anti-microbial mattress.







## Life, on your terms

Constellation Phoenix is more than a luxury ship. The Phoenix is a vision of superior engineering for the modern age — maintaining all the functionality of the other Constellations, but optimized for those who refuse to accept anything less than perfection.





## A modern classic

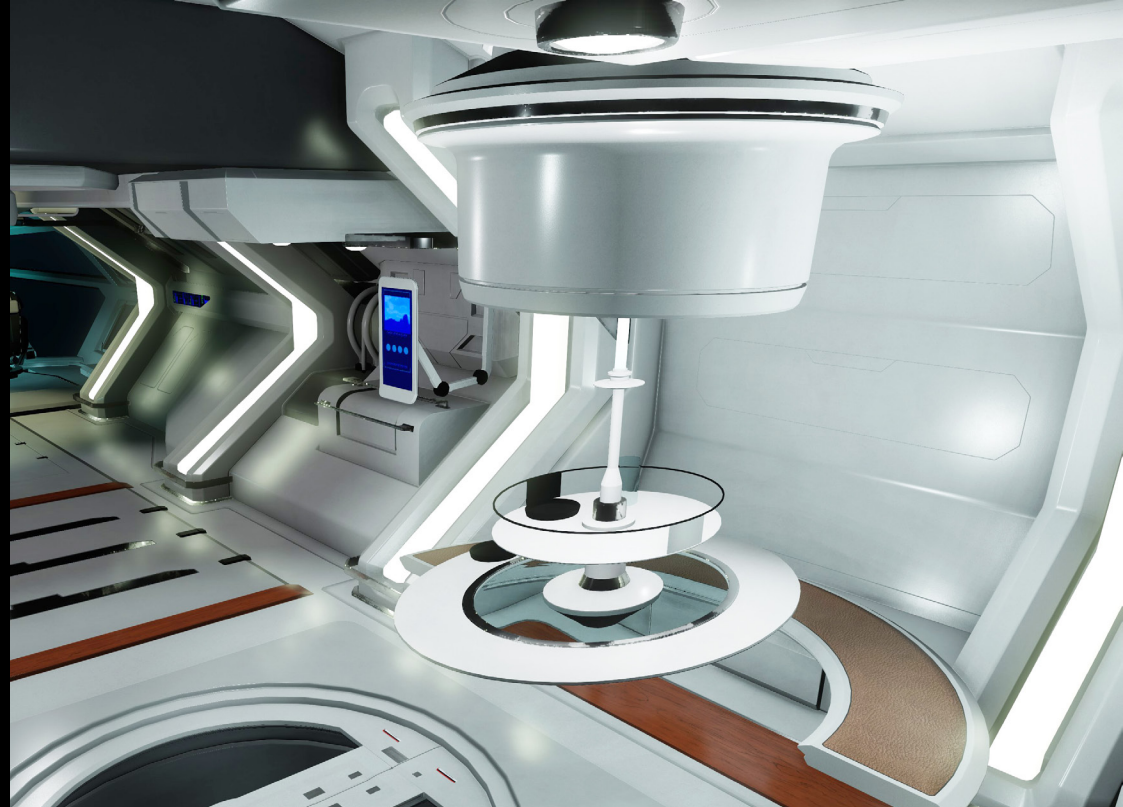
An atmosphere of  
tranquility and comfort  
awaits you and your  
guests in the spacious  
interiors designed by  
Emil Quast.



# A feast for the eyes

The Constellation Phoenix  
transforms RSI's award-winning  
hull into the luxury craft for the  
modern era and beyond.

Your guests will enjoy the finest  
amenities while travelling in safety  
and security.





# A captain's cabin

Private and stately, the master suite features a sleeping system from Wintle Design Co. designed exclusively for the Phoenix.

Or let your cares soak away in Wintle's custom hot tub just steps away from your shower and bed.







# The universe at your fingertips

Gaze out at the wonders of the universe via your Plexi-reinforced stellar skylight or catch up on Spectrum news and entertainment with a Rivon wallscreen. Regardless of how you pass your time, the lounge provides an open and comfortable environment to suit all your needs.





# Adventure beyond the hull

If you're looking for something a little more agile, blaze among the stars with Kruger Inter Galactic's P-72 Archimedes from Kruger, standard with every Constellation Phoenix. Whether for added security, exploring a system or simply want a lower profile when landing, the Archimedes is more than capable of stepping up to the task. *(At press time, the Archimedes is not yet produced. All Phoenixes will ship with "loaner" Merlins until the Archimedes is available.)*





# Nimble ally

A light-fighter in classification only, the P-52 Merlin offers a versatile and formidable extra layer of security when traveling.

## Base statistics

Role	Short-range travel
Manufacturer	Kruger Intergalactic
Max crew	1
Mass (kg)	4000
Cargo capacity (freight units)	—

## Dimensions

Vehicle length / beam / height (m)	12.3 / 7.7 / 2.5
------------------------------------	------------------

## Power plant, engines & thrusters

Factory power plant	ACOM StarLight II (1)
Max power plant	1
Factory engine	2x Kruger M1
Max engine (primary thrusters)	2x TR1
Maneuvering thrusters	8x TR1
Factory maneuvering thrusters	8x Kruger Intergalactic PolyThrust (TR1)

## Defenses

Class I hardpoint	2x size 1 (wings)
Class I equipment	2x KnightBridge Arms 9-Series Longsword (size 1)
Class I hardpoint	1x size 3 (spine)
Class I equipment	1x KnightBridge Arms 11-Series Broadsword (size 3)

## Shield & cooling

Factory shield	Seal INK-1 (S1)
Max shield	2
Cooling system	J-Span Micro-Frost

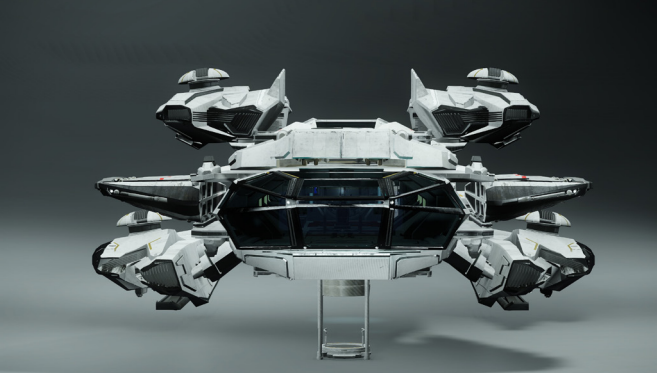




# constellation Phoenix







Bursting forth in glorious brilliance, Phoenix is unique in the heavens. None other can match its renown, and none other dare fly too near its splendor. Now, as one of the premier Constellations in the galaxy, Phoenix invites you to experience its majestic flight.

#### Base statistics

Role	Luxury Touring
Manufacturer	RSI
Max crew	4 (6 total)
Mass (kg)	81,000
Cargo capacity (freight units)	540

#### Dimensions

Vehicle length (m)	61.1
Vehicle beam (m)	26.6
Vehicle height (m)	13.4

#### Power plant, engines & thrusters

Factory power plant	Wei-Tek HF-R3 Plus (6)
Max power plant	7
Factory engine	4x Hammer Propulsion HEX 5.5 (TR5)
Max engine (primary thrusters)	4x TR5
Maneuvering thrusters	8x TR3
Factory maneuvering thrusters	8x KDK TM-8 RollFlex (TR3)

#### Shield & cooling

Factory shield	Gorgon Defender Unbreakable B (S5)
Max shield	6
Cooling system	J-Span Cryo-Star Enhanced

#### Defenses

Class 2 hardpoints	4x size 4 (nacelles)
Class 2 equipment	4x Behring Mk VI lasers laser (size 4)
Class 3 hardpoints	4x size 2 (retracting arms)
Class 3 equipment	2x size 2 missile racks (capacity 7 each)
Class 3 equipment	2x size 2 missile racks (capacity 12 each)
Class 5 hardpoints	2x size 4 (upper, lower twin turrets)
Class 5 equipment	4x Kroneg AS-74 Needle

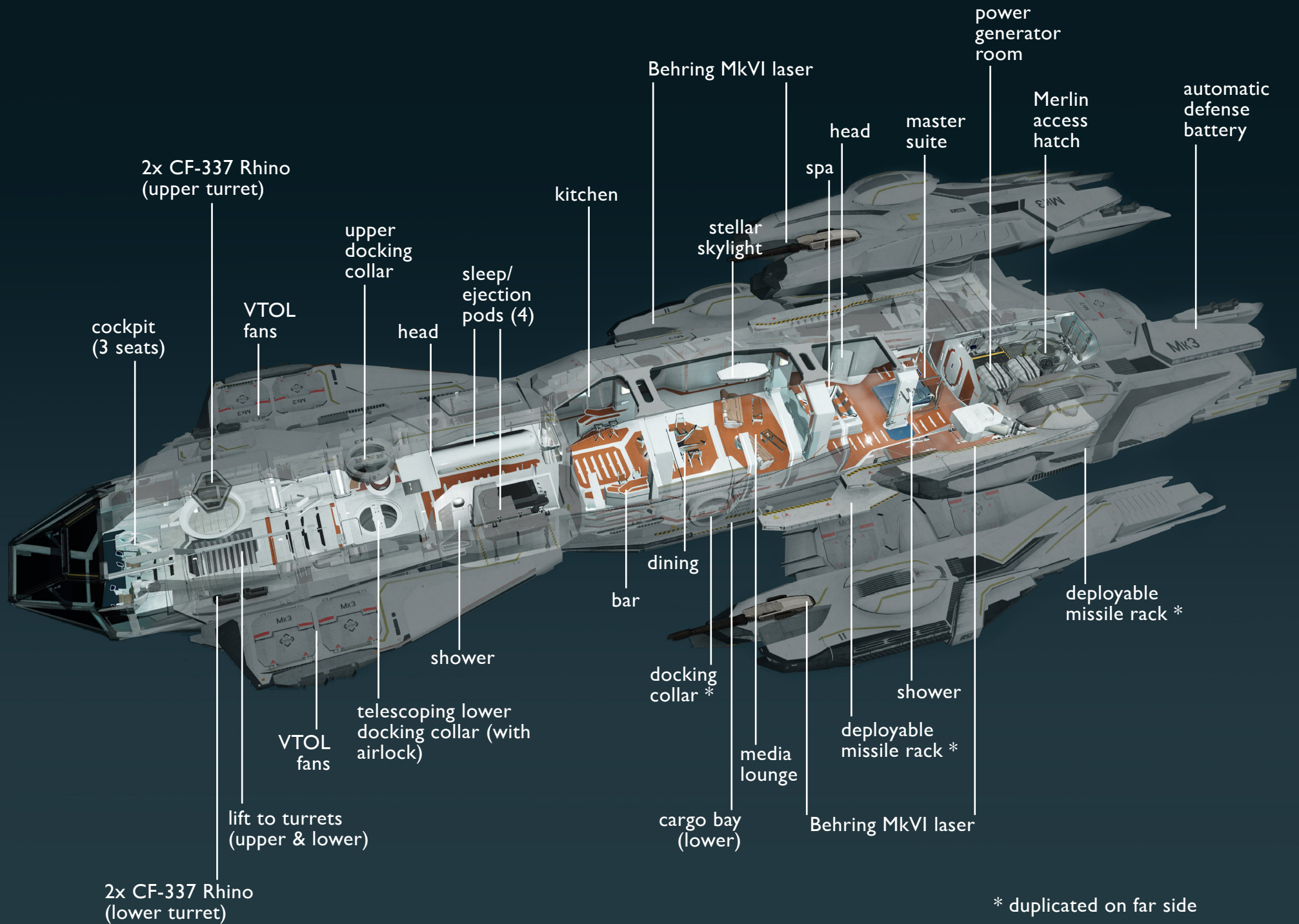
#### Additional equipment

RSI jump engine  
P-72 Archimedes close-range fighter  
(Merlin loaner until Archimedes produced)  
RSI Lynx (land rover; still to be produced)

#### New features for the 2945 Constellation Phoenix

Captain's chair: designed by Gallo & Frost.  
Vented and collapsible-entry single pods for guests and crew.  
Plush interiors with stainless steel highlighting  
Kitchen and bar  
Stellar skylight  
Real wood-lined walls  
Full-size hot tub, with integrated seating  
Glass-shielded shower  
Private bathroom (forward shower with fogged glass)  
Private ramps lead to power generator room  
Prefitted for expansion station







Constellation technical specification

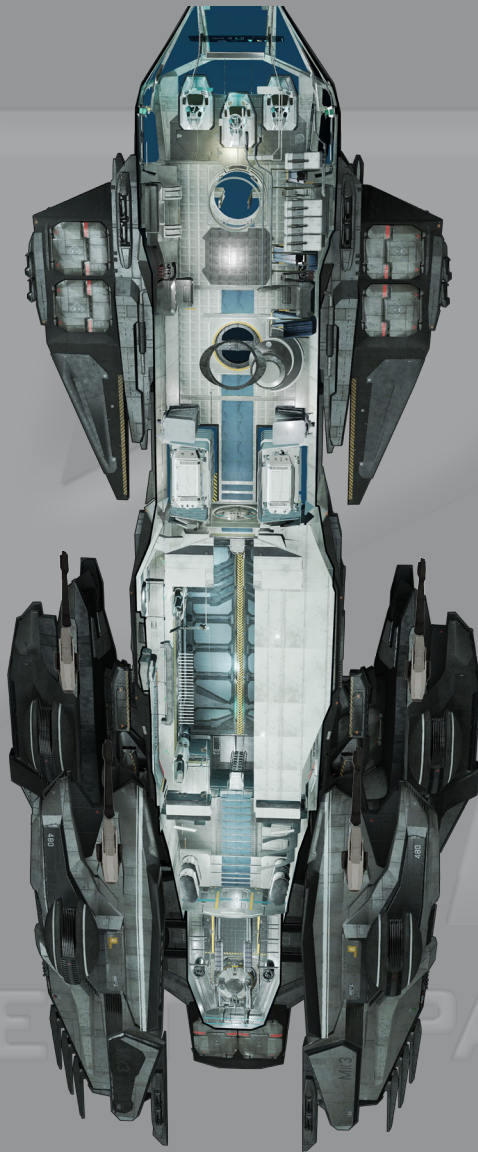


Base statistics	Andromeda	Taurus	Aquila	Phoenix
Role	Multi-Function	Transport	Exploration	Luxury Touring
Max crew	5	4	4	5
Mass (kg)	80,530	80,000	80,550	81,000
Cargo capacity (freight units)	1100	1900	1100	540
Dimensions				
Vehicle length (m)	61.1	58.8	60.1	61.1
Vehicle beam (m)	26.6	26.6	26.6	26.6
Vehicle height (m)	13.4	13.4	13.4	13.4
Power plant, engines & thrusters				
Factory power plant	Wei-Tek HF-R2 Plus (5)	Juno Starwerk Endurance-6600 (5)	GNP Etoile 55 (5)	Wei-Tek HF-R3 Plus (6)
Max power plant	6	6	6	7
Factory engine	4x Hammer Propulsion HE 5.5 (TR5)	4x X-forge E/S4-290 (TR4)	4x ArcCorp Arc Elite 500 (TR5)	4x Hammer Propulsion HEX 5.5 (TR5)
Max engine (primary thrusters)	4xTR5	4xTR5	4xTR5	4xTR5
Maneuvering thrusters	8xTR3	8xTR3	8xTR3	8xTR3
Factory maneuvering thrusters	8x KDKTM-8 RollFlex (TR3)	8x KDKTM-8 RollFlex (TR3)	8x KDKTM-8 RollFlex (TR3)	8x KDKTM-8 RollFlex (TR3)
Defenses				
Class 2 hardpoints	4x size 4 (nacelles)	4x size 4 (nacelles)	4x size 4 (nacelles)	4x size 4 (nacelles)
Class 2 equipment	4x Behring M5A laser (size 3)	4x Behring M5A laser (size 3)	4x Behring M5A laser (size 3)	4x Behring MkVI lasers (size 4)
Class 3 hardpoints	4x size 1 (retracting arms, 2 each side) 2x size 2 (top-loading)	2x size 1 (retracting arms, 1 each side) –	– 2x size 2 (top-loading)	4x size 2 (retracting arms, 2 each side) –
Class 3 equipment	4x size 1 missile racks (capacity 7 each) 2x size 2 missile racks (capacity 10 each)	2x size 1 missile racks (capacity 7 each) –	– 2x size 2 missile racks (capacity 10 each)	2x size 2 missile racks (capacity 7 each) <sup>1</sup> 2x size 2 missile racks (capacity 12 each) <sup>1</sup>
Class 5 hardpoints	2x size 4 (upper; lower twin turrets)	1x size 4 (upper twin turret)	1x size 4 (lower twin turret)	2x size 4 (upper; lower twin turrets)
Class 5 equipment	4x Klaus & Werner CF-337 Rhino (2 each)	2x VOLT Brimstone	2x Klaus & Werner CF-337 Rhino	4x Kroneg AS-74 Needle
Class 9 hardpoints	–	–	–	1x point-defense battery
Class 9 equipment	–	–	–	automatic point-defense gun
Shield & cooling				
Factory shield	Behring 6S7A (S5)	Beijing GH-156m (S4)	Behring 6S7A (S5)	Gorgon Defender Unbreakable B (S5)
Max shield	6	5	6	6
Cooling system	J-Span Cryo-Star	J-Span Cryo-Star	J-Span Cryo-Star	J-Span Cryo-Star Enhanced
Additional equipment				
All Constellations are prefitted for an optional expansion station	RSI jump engine P-52 Merlin close-range fighter	RSI jump engine	RSI jump engine Dock for optional P-52 Merlin RSI Ursa (land rover) Nav-E7 fuel tank expansion Nav-E7 long range scanner WillsOp jump point navigation sensors	RSI jump engine P-72 Archimedes close-range fighter (Merlin loaner until Archimedes produced) RSI Lynx (land rover; still to be produced)

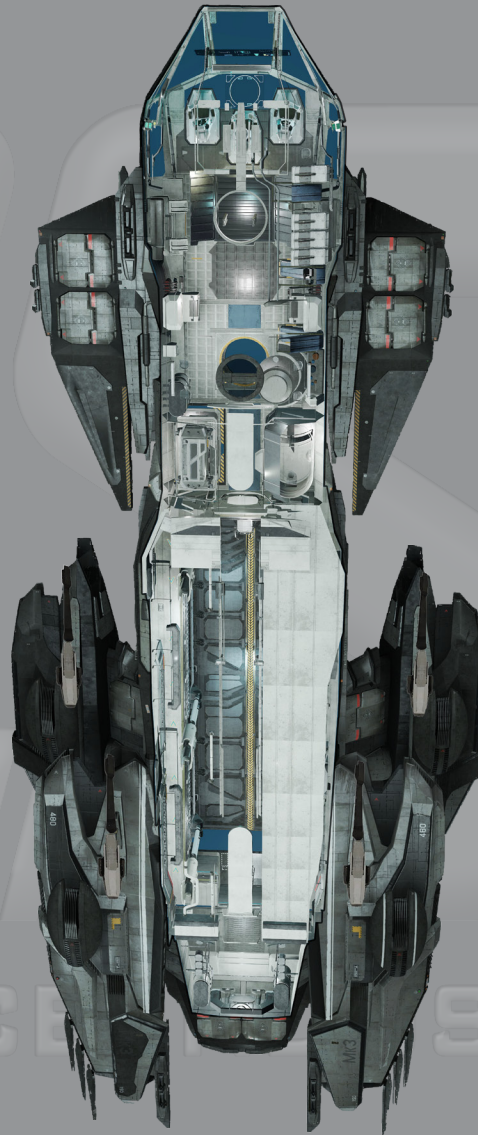
<sup>1</sup> FF/IR selectable



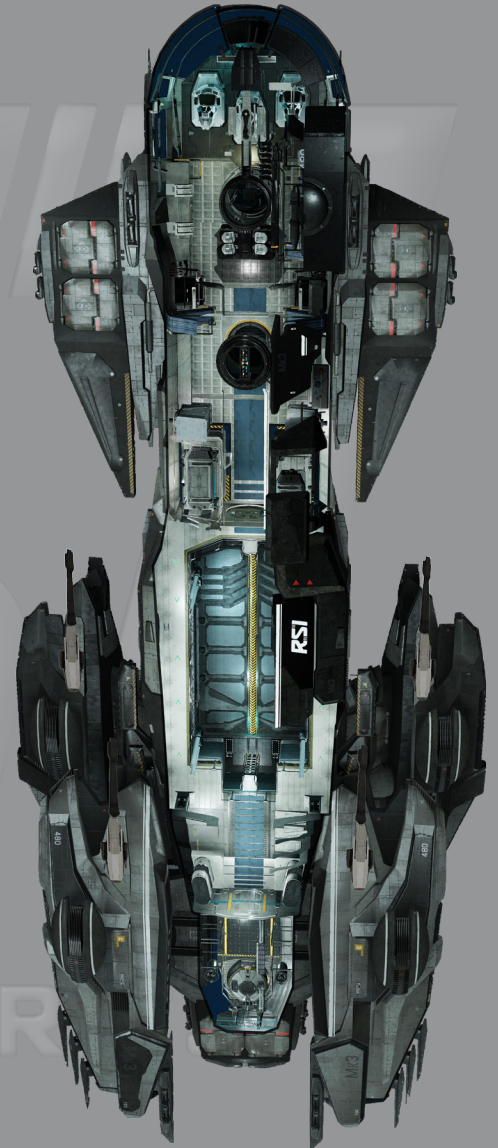
RSI: the premier constellations in the galaxy



Andromeda



Taurus



Aquila

All illustrations and specifications are based upon current information available as at August 2944. Colors may vary.

Roberts Space Industries reserves the right to make changes at any time without notice, to colors, materials, equipment, specifications and models. Images may show optional equipment. Some craft may be shown with non-UEE equipment. Model year designation on any particular model may be longer or shorter than 12 months. Roberts Space Industries makes all reasonable efforts to provide accurate information; however, there is no guarantee of accuracy. No liability is assumed by Roberts Space Industries. Additional information may be obtained from your Roberts Space Industries authorized dealership. ©Copyright Roberts Space Industries 2014. The Roberts Space Industries name and logo are registered trademarks owned by RSI, Incorporated.